

Freelite™

Model: **PVT200, PVW207, PVB207**

CALI LED Solar Lights

Installation Instructions

ENSURE YOU READ THE INSTRUCTIONS FULLY BEFORE COMMENCING INSTALLATION.

These solar lights offer a simple “install and forget” solution. Light, photovoltaic panel and battery with Energy Management System (EMS) are all in one. The light automatically turns on at dusk and off at dawn. The EMS gradually steps down light output overnight to manage battery life to provide all-night lighting for several days.

PIR SENSOR MODELS:

The Bollard and Wall light models feature a Passive Infrared (PIR) sensor that boosts light output when someone is detected and drops to 20% light output after 20 seconds of inactivity. This preserves battery life for when light is most needed. Detection range is 3 meters, 160 degrees.



PVT200-BL



PVW207-BL



PVB207-BL

LOCATION OF INSTALLATION:

For best results your PVP panel should be exposed to as much direct sunlight as possible. When placing the solar panel, account for objects that may cast shade for example fences and trees. In winter, the sun sits lower, and days are shorter, so ensure the PV panel has clear exposure to maximize battery charging during shorter days.

PIR MODELS:

The PIR sensor detects moving heat, triggering the light. To avoid unwanted activation, carefully consider anything in the PIR's detection area of is 3 meters, 160 degrees. Avoid sources of heat such as air conditioning unit motors etc, which may set off the sensor. The PIR is best set up so it is pointing across the path of movement. It can detect front-on movement but will not be so sensitive.



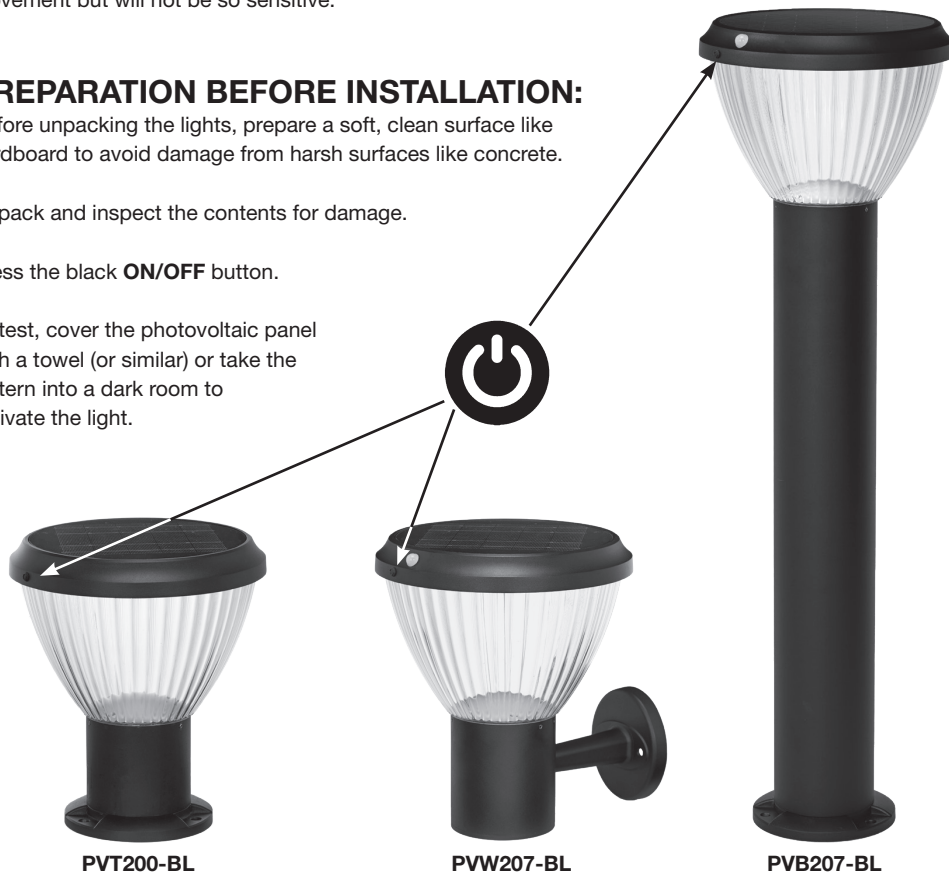
PREPARATION BEFORE INSTALLATION:

Before unpacking the lights, prepare a soft, clean surface like cardboard to avoid damage from harsh surfaces like concrete.

Unpack and inspect the contents for damage.

Press the black **ON/OFF** button.

To test, cover the photovoltaic panel with a towel (or similar) or take the lantern into a dark room to activate the light.



PEDESTAL TOP LIGHT

Mount on fences, pillars, garden walls, fence posts, decks, or various, above-ground horizontal surfaces with sun exposure. Fasten securely through the 3 holes in the mounting base ensuring it is stable. Use fixings suitable for the substrate the light is being fixed onto.



WALL LANTERNS

It is good to mount these at a reasonable height, so they are not an obstruction. They are usually better exposed to direct sun at a good height of 1.6 metres or higher, while accounting for potential shadowing from roof eaves. Fasten securely through the 2 holes in the mounting base. Use fixings suitable for the substrate the light is being fixed onto.



BOLLARD LIGHT

The post may be fastened to a concrete path, a large paving slab, cast concrete plinth or decking using the base flange provided. If placed in a garden, ensure it is placed in a raised area of the garden so that water does not pool around and damage the paint finish. Fasten securely through the 3 holes in the mounting base ensuring it is stable. Use fixings suitable for the substrate the light is being fixed onto. Bollard lights can be placed temporarily for checking light coverage but ensure they are stabilised, so they do not fall over and become damaged. Position the PIR sensor toward the path or desired direction. For multiple bollards, space them about 6 meters apart for continuous lighting.



PRODUCT SPECIFICATIONS:

PVP Voltage	5V Monocrystalline
PV Peak Wattage	4.5 Watt
Battery Voltage	3.2V lithium Iron Phosphate
Battery Watt-Hours	32 Wh
LED Wattage	5 Watts
Light beam angle	150 degrees
Colour Temperature	3,000K
Measured Lumens	325 lm
Battery autonomy	2-3 days of cloud
PVB207 Garden bollard dimensions	850mm height x 260mm diameter
PVW207 Wall light dimensions	310mm height x 260mm diameter x 315 depth
PVT200 Pedestal top dimensions	300mm height x 260mm diameter
Water Ingress Protection	IP65
PIR sensor	3M range, 160 degrees
Materials	Die cast and extruded Aluminium and UV stabilised polycarbonate

MAINTENANCE.

Important:

Important: Rain will wash dust off from the PVP however other debris will need cleaning off periodically with soapy water and a soft brush to maintain battery condition.

If this product is not working and is still not working after referring to the info centre guide on **www.alphalighting.co.nz** do not attempt to repair the fitting yourself – please contact Gartner Superlux Ltd for advice.

Note:

The battery is a recyclable item, at the end of life ensure you dispose of the product responsibly .

Due to continuous design improvement, specifications are subject to change without notice.

**IMPORTANT KEEP INSTRUCTION SHEET
IN A SAFE PLACE FOR FUTURE REFERENCE**